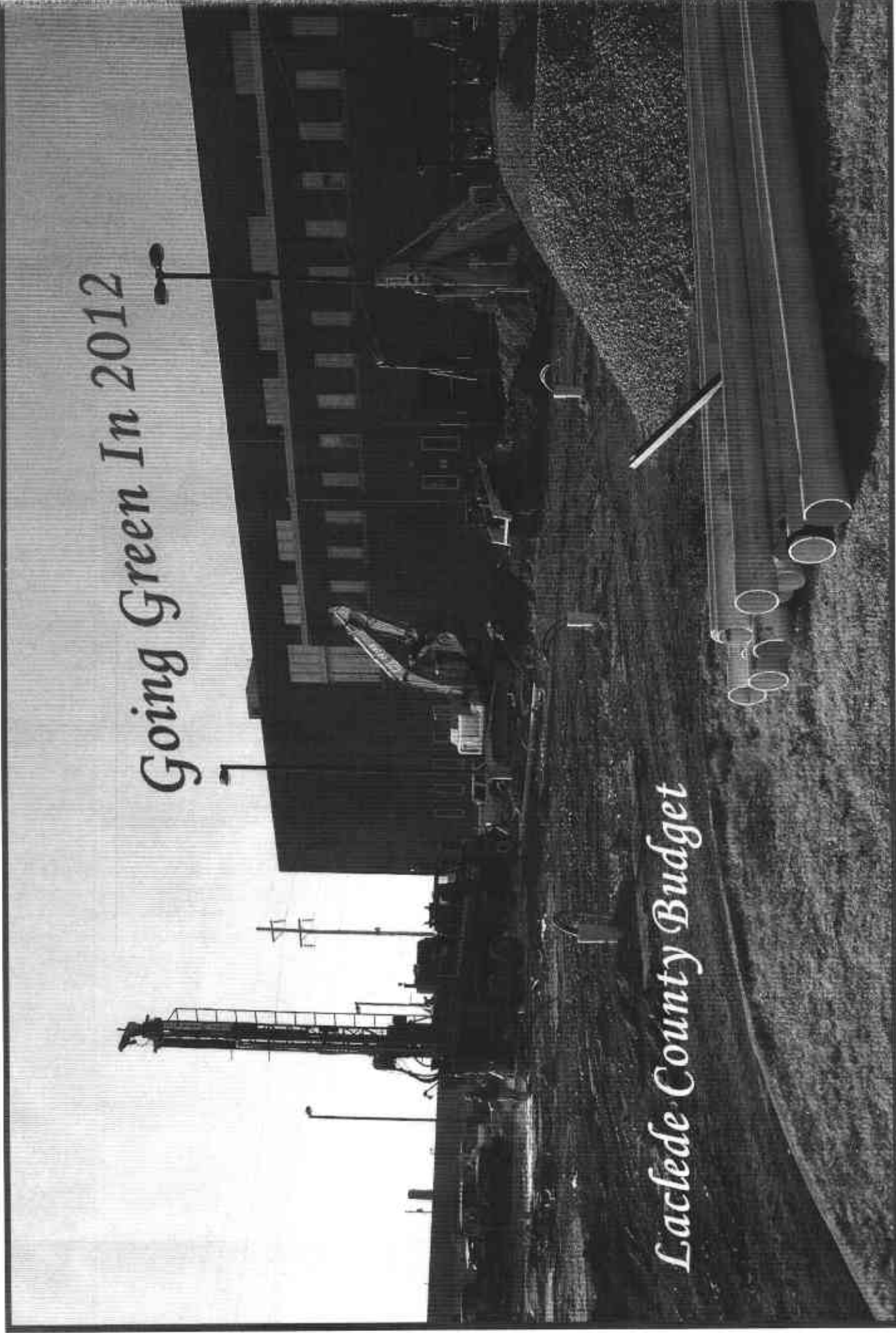


Going Green In 2012

Laclede County Budget

2012



Now on this 27th day of January, 2012, comes Glenda Mott, Clerk of the County

Commission, as budget officer and presents for the records of the County Commission, information and estimates for the year 2012 as required by The County Budget Law (Sections 50.525 to 50.745, RSMo.) being in words and figures as follows:

BUDGET MESSAGE:

The County Commission of Laclede County oversees nine operating funds of the County. These funds are General Revenue, Road and Bridge, Assessment, 911 Communications, Law Enforcement Sales Tax, County Development Tax, Capital Improvement/Reserve, Health Insurance and CDBG grant project. This budget contains estimated revenues and appropriated expenditures approved by the Laclede County Commission.

The General Revenue fund beginning balance in 2011 was \$1,855,890.94 and ending cash balance is \$2,194,075.10. Thirty-eight percent of the revenues of 2011 were from the County General Revenue one-half cent sales tax. The one-half cent County Development Sales Tax up for renewal in 2012, contributed \$605,000 to the operational cost of General Fund in 2011. Estimated revenues for 2012 are \$4,692,466.82 and the appropriated expenditures of \$5,844,364.56.

The Road and Bridge fund is responsible for maintenance of 500 miles of road and 26 bridges in Laclede County. This budget calls for \$2,350,991.44 of estimated revenues and \$2,531,553 in appropriated expenditures. Revenues for 2012 include \$300,000 from General Revenue sales tax and \$850,000 from County Development Sales Tax fund. A bridge being replaced in the Conway Special #2 Road District is included in this budget.

The Assessment fund estimated revenues of \$381,679.22 that includes \$81,758 reimbursement from the State of Missouri. The appropriated expenditures are \$390,190.60.

The 911 Communications fund receives a telephone surcharge from county land line users. Estimated revenues for 2012 are \$389,000 and appropriated expenditures of \$ 517,027.02. Declining land line phones is decreasing the operating revenues for this budget. There is a urgent need for new legislation that will allow a surcharge on cell phones to support 911 communication operations.

The Law Enforcement Sales Tax fund estimated revenues are \$4,000 and appropriated expenditures of \$635,000. This fund no longer receives one-half cent sales tax revenue and has only funds remaining from the Government Center building project. This fund has been used to maintain, support and equip the building and grounds.

The Capital Improvement/Reserve fund estimated revenues are \$544,730.60 and appropriated expenditures of \$471,648. This fund will assist in paying on the cost of the energy heating and cooling upgrade for the Government Center building.

The County Development Sales Tax fund estimated revenues are \$1,935,000 and appropriated expenditures of \$ 2,380.403.12. Expenditures include funding to outside governmental entities as promised to the voters.


The Health Insurance fund serves as a clearinghouse for county and employee contributions for the county employee health insurance.

The CDBG Project fund revenues and expenses is a pass-through grant for land use planning with the Lake Ozarks Council of Local Governments.

The remainders of the budgets contained are special funds of officeholders used for specific purposes and at their discretion. The special funds are reviewed and considered before the final budget approvals.

The County is in the process of replacing our inefficient and nearly defunct heating and cooling system. We are also asking the voters to again renew the County Development one-half cent sales tax that will expire in 2013. This sales tax has brought in \$1.9 million dollars to fund the county operations, Special Road Districts, Conway and Phillipsburg, rural fire protection districts and economic development in Laclede County. Fortunately, we are not asking for an increase in sales taxes for our local residents only to renew an existing sales tax. We will pray the voters understand the importance of this part of our revenues source.

Respectfully submitted,



County Clerk and Budget Officer

Laclede County

LACLEDE COUNTY
 2012 BUDGET
 TABLE OF CONTENTS

	<u>Page</u>
Budget Message	1
Schedule of Expenditures of Federal Awards	2
Schedule of Assessed Valuations, Tax Rates, & County Long-Term Debt	3
Appropriation Order	4
Summary of Budgets	5
Summary of Prior Year Actual Amounts	6
General Revenue Fund	
Summary	7
Estimated Revenues	8-9
Estimated Expenditures	10-21
Special Road and Bridge Fund	
Summary	22
Estimated Revenues	23-24
Estimated Expenditures	25-28
Assessment Fund	
Summary	29
Estimated Revenues	30
Estimated Expenditures	31
Enhanced 911 Fund	
Summary	32
Estimated Revenues	33-34
Estimated Expenditures	35-36
Law Enforcement Sales Tax Fund	
Summary	37
Estimated Revenues	38-39
Estimated Expenditures	40
Capital Improvement Fund	
Summary	41
Estimated Revenues	42-43
Estimated Expenditures	44
Health Insurance Fund	
Summary	45
Estimated Revenues	46-47
Estimated Expenditures	48
County Developmental Tax Fund	
Summary	49
Estimated Revenues	50-51
Estimated Expenditures	52-53
Election Services Fund	
Summary	54
Estimated Revenues	55-56
Estimated Expenditures	57

LACLEDE COUNTY
 2012 BUDGET
 TABLE OF CONTENTS

	<u>Page</u>
Law Enforcement Training Fund	
Summary	58
Estimated Revenues	59-60
Estimated Expenditures	61
Post Commission Fund	
Summary	62
Estimated Revenues	63-64
Estimated Expenditures	65
Sheriff Discretionary Fund	
Summary	66
Estimated Revenues	67 -68
Estimated Expenditures	69
Sheriff Revolving Fund	
Summary	70
Estimated Revenues	71-72
Estimated Expenditures	73
Inmate Security Fund	
Summary	74
Estimated Revenues	75-76
Estimated Expenditures	77
Deputy Sheriff Fund	
Summary	78
Estimated Revenues	79-80
Estimated Expenditures	81
Prosecuting Attorney Training Fund	
Summary	82
Estimated Revenues	83-84
Estimated Expenditures	85
Prosecuting Attorney Bad Check Fund	
Summary	86
Estimated Revenues	87-88
Estimated Expenditures	89
Recorder Special Fund	
Summary	90
Estimated Revenues	91-92
Estimated Expenditures	93
Recorder Tech Fund	
Summary	94
Estimated Revenues	95-96
Estimated Expenditures	97

LACLEDE COUNTY
2012 BUDGET
TABLE OF CONTENTS

	<u>Page</u>
Circuit Clerk Interest Fund	
Summary	98
Estimated Revenues	99-100
Estimated Expenditures	101
Tax Maintenance Fund	
Summary	102
Estimated Revenues	103 -104
Estimated Expenditures	105
Shelter Abuse Fund	
Summary	106
Estimated Revenues	107-108
Estimated Expenditures	109
Law Library Fund	
Summary	110
Estimated Revenues	111-112
Estimated Expenditures	113
Juvenile Assessment Fund	
Summary	114
Estimated Revenues	115-116
Estimated Expenditures	117
Water #3 Cdbg / Land Use Planning Grant Fund	
Summary	118
Estimated Revenues	119-120
Estimated Expenditures	121

LACLEDE COUNTY
 2012 BUDGET
 SCHEDULE OF EXPENDITURES OF FEDERAL AWARDS

Federal CFDA Number	Federal Grantor/Pass-Through Grantor/Program Title	Pass-Through Entity Identifying Number	Year Ended December 31, 2011	
			Federal Share of Expenditures	County Match Percentage Required
U. S. DEPARTMENT OF AGRICULTURE				
Passed through state:				
10.557	Department of Health and Senior Services - Special Supplemental Nutrition Program for Women, Infants, and Children		\$	%
10.559	Summer Food Service Program for Children			
10.665	Office of Administration - Schools and Roads - Grants to States		36,188.87	
U.S. DEPARTMENT OF HOUSING AND URBAN DEVELOPMENT				
Passed through state:				
14.228	Department of Economic Development - Community Development Block Grants/State's Program and Non-Entitlement Grants in Hawaii			
14.231	Department of Social Services - Emergency Shelter Grants Program			
14.257	American Recovery & Re-investment Act		13,095.07	
U.S. DEPARTMENT OF JUSTICE				
Direct programs:				
16.710	Public Safety Partnership and Community Policing Grants			
16	Equitable Sharing of Seized and Forfeited Property			
Passed through:				
16.523	State Department of Public Safety - Juvenile Accountability Block Grants			
16.540	Juvenile Justice and Delinquency Prevention - Allocation to States			
16.554	National Criminal History Improvement Program			
16.575	Crime Victim Assistance			
16.579	Edward Byrne Memorial Formula Grant Program			
16.588	Violence Against Women Formula Grants			
16.738	Edward Byrne Memorial Justice Assistance Grant Program			
16.580	Cape Girardeau County - Edward Byrne Memorial State and Local Law Enforcement Assistance Discretionary Grants Program			
16	Missouri Sheriffs' Association - Domestic Cannabis Eradication/Suppression Program			
16.804	Recovery Act - Justice Assistance		15,845.00	

LACLEDE COUNTY
 2012 BUDGET
 SCHEDULE OF EXPENDITURES OF FEDERAL AWARDS

Federal CFDA Number	Federal Grantor/Pass-Through Grantor/Program Title	Pass-Through Entity Identifying Number	Year Ended December 31, 2011	
			Federal Share of Expenditures	County Match Percentage Required
U. S. DEPARTMENT OF TRANSPORTATION				
Passed through state:				
20.205	Highway and Transportation Commission - Highway Planning and Construction	BRO - BRO - BRO - BRO -		
20.601	Mo Safety Center		35.98	
20.703	Department of Public Safety - Interagency Hazardous Materials Public Sector Training and Planning Grants			
GENERAL SERVICES ADMINISTRATION				
Passed through state Office of Administration -				
39.003	Donation of Federal Surplus Personal Property		10,000.00	
Passed through the Office of Secretary of State -				
39.011	Election Reform Payments		8,180.00	
ELECTION ASSISTANCE COMMISSION				
Passed through the Office of Secretary of State -				
90.401	Help America Vote Act Requirements Payments			
U. S. DEPARTMENT OF HEALTH AND HUMAN SERVICES				
Passed through state:				
Department of Health and Senior Services -				
93.197	Childhood Lead Poisoning Prevention Projects - State and Local Childhood Lead Poisoning Prevention and Surveillance of Blood Lead Levels in Children			
93.268	Immunization Grants			
93.283	Centers for Disease Control and Prevention - Investigations and Technical Assistance			
Department of Social Services -				
93.563	Child Support Enforcement			
93.569	Community Services Block Grant		5,754.00	

LACLEDE COUNTY
 2012 BUDGET
 SCHEDULE OF EXPENDITURES OF FEDERAL AWARDS

Federal CFDA Number	Federal Grantor/Pass-Through Grantor/Program Title	Pass-Through Entity Identifying Number	Year Ended December 31, 2011	
			Federal Share of Expenditures	County Match Percentage Required
93.575	Department of Health and Senior Services - Child Care and Development Block Grant			
93.658	Department of Social Services - Foster Care - Title IV-E			
93.617	Health & Human Services - Secretary of State		1,714.00	
93.919	Department of Health and Senior Services - Cooperative Agreements for State-Based Comprehensive Breast and Cervical Cancer Early Detection Programs			
93.940	HIV Prevention Activities - Health Department Based			
93.945	Assistance Programs for Chronic Disease Prevention and Control			
93.991	Preventive Health and Health Services Block Grant			
93.994	Maternal and Child Health Services Block Grant to the States			
U. S. DEPARTMENT OF HOMELAND SECURITY				
Passed through State Department of Public Safety:				
97.004	State Domestic Preparedness Equipment Support Program			
97.036	Disaster Grants - Public Assistance Grants (Presidentially declared disasters)			
97.042	Emergency Management Performance Grants		58,032.01	
97.067	Homeland Security Grant Program			
Total Expenditures of Federal Awards			\$	<u>148,844.93</u>

N/A - Not applicable

LACLEDE COUNTY
 2012 BUDGET
 SCHEDULE OF EXPENDITURES OF FEDERAL AWARDS

Federal CFDA Number	Federal Grantor and Program Title	Pass-Through Grantor's Number	Grant Award Amount
---------------------------	-----------------------------------	-------------------------------------	--------------------------

GRANTS AWARDED FOR WHICH THERE WERE NO REVENUES OR
 EXPENDITURES DURING THE YEAR

Total Grants Awarded for which there were no Revenues
 or Expenditures during the Year

\$ 0.00

This schedule is a complete and accurate accounting of federal financial activity received or administered by the county.

Signature: _____

Title: _____

County: _____

Date: _____

If the county, or any other county official or board was awarded funding directly
 from the federal government please indicate the DUNS number(s) below:

County
 Other officials or boards:

DUNS

LACLEDE COUNTY
 2012 BUDGET
 APPROPRIATION ORDER

Whereas the Commission is advised that the budget for the year 2012 has been prepared and adopted in accordance with the County Budget Law (Sections 50.525 to 50.745, RSMo) and had been made available for public distribution between the 17th day of January, 2012, and the 27th day of January, 2012, and that a public hearing was held on the 27th day of January, 2012, preceded by public notice set forth on the 17th day of January, 2012.

And the Commission, being advised in the premises, orders that said budget estimate be spread upon the records of this Commission, and recorded on the records of this Commission, the same as above set out, is hereby approved and adopted this 27th day of January, 2012, as the revised and final budget for Laclede County, Missouri, for the year 2012.

And it is further ordered, adjudged and decreed that the following amounts are hereby appropriated, apportioned, and set aside for the payment of proposed expenditures of the following funds for 2012, as set forth in the approved column on the pages noted:

<u>Fund Name</u>	<u>Appropriated Amount</u>	<u>Page</u>	<u>through</u>	<u>Page</u>
GENERAL REVENUE FUND	5,844,364.56	10		21
SPECIAL ROAD AND BRIDGE FUND	2,531,553.00	25		28
ASSESSMENT FUND	390,190.60	31		31
ENHANCED 911 FUND	516,727.02	35		36
LAW ENFORCEMENT SALES TAX FUND	635,000.00	40		40
CAPITAL IMPROVEMENT FUND	471,648.00	44		44
HEALTH INSURANCE FUND	558,000.00	48		48
COUNTY DEVELOPMENTAL TAX FUND	2,380,403.12	52		53
ELECTION SERVICES FUND	49,000.00	57		57
LAW ENFORCEMENT TRAINING FUND	13,088.22	61		61
POST COMMISSION FUND	3,877.12	65		65
SHERIFF DISCRETIONARY FUND	95,382.65	69		69
SHERIFF REVOLVING FUND	70,643.71	73		73
INMATE SECURITY FUND	10,690.94	77		77
DEPUTY SHERIFF FUND	90,000.00	81		81
PROSECUTING ATTORNEY TRAINING FUND	2,000.00	85		85
PROSECUTING ATTORNEY BAD CHECK FUND	240,330.00	89		89
RECORDER SPECIAL FUND	365.00	93		93
RECORDER TECH FUND	7,254.00	97		97
CIRCUIT CLERK INTEREST FUND	0.00	101		101
TAX MAINTENANCE FUND	40,700.00	105		105
SHELTER ABUSE FUND	12,000.00	109		109
LAW LIBRARY FUND	160,000.00	113		113
JUVENILE ASSESSMENT FUND	0.00	117		117
WATER #3 CDBG / LAND USE PLANNING GRANT FUND	88,000.00	121		121


LACLEDE COUNTY
 2012 BUDGET
 APPROPRIATION ORDER

<u>Fund Name</u>	<u>Appropriated Amount</u>	<u>Page</u>	<u>through</u>	<u>Page</u>
		_____		_____
		_____		_____
		_____		_____
		_____		_____
		_____		_____
		_____		_____

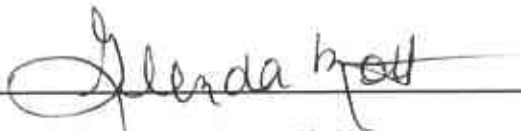
It is further ordered and adjudged that the Clerk of this Commission shall within five (5) days of the 27th day of January, 2012, file a certified copy of this order and judgment with Jean Cook, County Treasurer of Laclede County, Missouri taking said Treasurer's receipt therefor and said Clerk shall forward by registered mail a certified copy of this order and judgment to the State Auditor of Missouri.



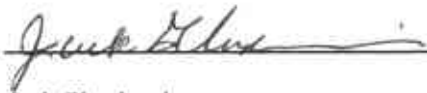
 Danny Rhoades, Presiding Commissioner
 Laclede County, Missouri



 Joe Pickering,
 Associate Commissioner Eastern District



 Attest: (Glenda Mott, County Clerk)



 Jack Glendenning,
 Associate Commissioner Western District

LACLEDE COUNTY
2012 SUMMARY OF BUDGETS

	General Revenue Fund	Special Road and Bridge Fund	Assessment Fund	Enhanced 911 Fund
NET CASH AVAILABLE FOR 2012	7,886,678.70	2,194,075.10	298,267.16	432,888.40
Revenues, 2012				
Property tax	538,500.00	535,000.00	3,500.00	0.00
Sales tax	3,840,000.00	1,920,000.00	0.00	0.00
Intergovernmental revenues	2,353,514.61	272,147.82	1,177,801.00	364,403.36
Charges for services	834,067.18	727,100.00	0.00	0.00
Interest	74,554.24	20,000.00	3,100.00	5,326.09
Other	1,213,985.21	595,819.00	16,590.44	11,949.77
Operating transfers in	2,411,185.00	622,400.00	1,150,000.00	0.00
Total Revenues	11,265,806.24	4,692,466.82	2,350,991.44	381,679.22
TOTAL FUNDS AVAILABLE	19,152,484.94	6,886,541.92	2,649,258.60	814,567.62
Expenditures, 2012				
County Commission	4,262,409.12	117,358.00		0.00
County Clerk	120,750.00	120,750.00		0.00
Elections	191,208.00	142,208.00		0.00
Buildings and grounds	934,798.00	934,798.00		0.00
Employee fringe benefits	590,000.00	590,000.00		0.00
County Treasurer	63,680.00	63,680.00		0.00
County Collector	145,524.00	104,824.00		0.00
Recorder of Deeds	120,835.00	113,216.00		0.00
Circuit Clerk	57,470.00	57,470.00		0.00
Court Administration	412,121.51	252,121.51		0.00
Public Administrator	104,854.00	104,854.00		0.00
Sheriff	1,615,994.98	815,585.32		516,727.02
Jail	815,632.23	815,632.23		0.00
Prosecuting Attorney	569,905.50	327,905.50		0.00
Juvenile Officer	0.00	0.00		0.00
County Coroner	22,950.00	22,950.00		0.00
Health and welfare	20,000.00	20,000.00		0.00
Debt service	0.00	0.00		0.00
Transfers out	400,000.00	400,000.00		0.00
Emergency Fund	400,000.00	400,000.00		0.00
Assessor	390,190.60		390,190.60	0.00
Highways and roads	2,531,553.00		2,531,553.00	0.00
Other	441,012.00	441,012.00		0.00
Total Expenditures	14,210,887.94	5,844,364.56	2,531,553.00	390,190.60
ESTIMATED ENDING CASH BALANCE	4,941,597.00	1,042,177.36	117,705.60	424,377.02
OTHER NET RESOURCES AVAILABLE	0.00	0.00	0.00	0.00
ESTIMATED ENDING BALANCE	4,941,597.00	1,042,177.36	117,705.60	424,377.02

LACLEDE COUNTY
2012 SUMMARY OF BUDGETS

	Law Enforcement	Capital Improvement	Health Insurance	County Developmental Tax	Election Services
	Sales Tax Fund	Fund	Fund	Fund	Fund
NET CASH AVAILABLE FOR 2012	723,455.30	1,741,043.02	16,765.12	1,397,684.03	20,597.14
Revenues, 2012					
Property tax	0.00	0.00	0.00	0.00	0.00
Sales tax	0.00	0.00	0.00	1,920,000.00	0.00
Intergovernmental revenues	0.00	369,660.60	0.00	0.00	0.00
Charges for services	0.00	0.00	60,000.00	0.00	4,500.00
Interest	4,000.00	15,000.00	100.00	15,000.00	100.00
Other	0.00	70.00	4,200.00	0.00	42,756.00
Operating transfers in	0.00	160,000.00	478,785.00	0.00	0.00
Total Revenues	4,000.00	544,730.60	543,085.00	1,935,000.00	47,356.00
TOTAL FUNDS AVAILABLE	727,455.30	2,285,773.62	559,850.12	3,332,684.03	67,953.14
Expenditures, 2012					
County Commission	635,000.00	471,648.00	558,000.00	2,380,403.12	0.00
County Clerk	0.00	0.00	0.00	0.00	0.00
Elections	0.00	0.00	0.00	0.00	49,000.00
Buildings and grounds	0.00	0.00	0.00	0.00	0.00
Employee fringe benefits	0.00	0.00	0.00	0.00	0.00
County Treasurer	0.00	0.00	0.00	0.00	0.00
County Collector	0.00	0.00	0.00	0.00	0.00
Recorder of Deeds	0.00	0.00	0.00	0.00	0.00
Circuit Clerk	0.00	0.00	0.00	0.00	0.00
Court Administration	0.00	0.00	0.00	0.00	0.00
Public Administrator	0.00	0.00	0.00	0.00	0.00
Sheriff	0.00	0.00	0.00	0.00	0.00
Jail	0.00	0.00	0.00	0.00	0.00
Prosecuting Attorney	0.00	0.00	0.00	0.00	0.00
Juvenile Officer	0.00	0.00	0.00	0.00	0.00
County Coroner	0.00	0.00	0.00	0.00	0.00
Health and welfare	0.00	0.00	0.00	0.00	0.00
Debt service	0.00	0.00	0.00	0.00	0.00
Transfers out	0.00	0.00	0.00	0.00	0.00
Emergency Fund	0.00	0.00	0.00	0.00	0.00
Assessor	0.00	0.00	0.00	0.00	0.00
Highways and roads	0.00	0.00	0.00	0.00	0.00
Other	0.00	0.00	0.00	0.00	0.00
Total Expenditures	635,000.00	471,648.00	558,000.00	2,380,403.12	49,000.00
ESTIMATED ENDING CASH BALANCE	92,455.30	1,814,125.62	1,850.12	952,280.91	18,953.14
OTHER NET RESOURCES AVAILABLE	0.00	0.00	0.00	0.00	0.00
ESTIMATED ENDING BALANCE	92,455.30	1,814,125.62	1,850.12	952,280.91	18,953.14

LACLEDE COUNTY
2012 SUMMARY OF BUDGETS

	Law Enforcement Training Fund	Post Commission Fund	Sheriff Discretionary Fund	Sheriff Revolving Fund	Inmate Security Fund
NET CASH AVAILABLE FOR 2012	6,835.87	488.19	44,929.66	46,835.29	4,514.47
Revenues, 2012					
Property tax	0.00	0.00	0.00	0.00	0.00
Sales tax	0.00	0.00	0.00	0.00	0.00
Intergovernmental revenues	0.00	0.00	50,000.00	23,379.50	6,122.33
Charges for services	6,185.44	3,381.74	0.00	0.00	0.00
Interest	66.91	7.19	452.99	428.92	54.14
Other	0.00	0.00	0.00	0.00	0.00
Operating transfers in	0.00	0.00	0.00	0.00	0.00
Total Revenues	6,252.35	3,388.93	50,452.99	23,808.42	6,176.47
TOTAL FUNDS AVAILABLE	13,088.22	3,877.12	95,382.65	70,643.71	10,690.94
Expenditures, 2012					
County Commission	0.00	0.00	0.00	0.00	0.00
County Clerk	0.00	0.00	0.00	0.00	0.00
Elections	0.00	0.00	0.00	0.00	0.00
Buildings and grounds	0.00	0.00	0.00	0.00	0.00
Employee fringe benefits	0.00	0.00	0.00	0.00	0.00
County Treasurer	0.00	0.00	0.00	0.00	0.00
County Collector	0.00	0.00	0.00	0.00	0.00
Recorder of Deeds	0.00	0.00	0.00	0.00	0.00
Circuit Clerk	0.00	0.00	0.00	0.00	0.00
Court Administration	0.00	0.00	0.00	0.00	0.00
Public Administrator	0.00	0.00	0.00	0.00	0.00
Sheriff	13,088.22	3,877.12	95,382.65	70,643.71	10,690.94
Jail	0.00	0.00	0.00	0.00	0.00
Prosecuting Attorney	0.00	0.00	0.00	0.00	0.00
Juvenile Officer	0.00	0.00	0.00	0.00	0.00
County Coroner	0.00	0.00	0.00	0.00	0.00
Health and welfare	0.00	0.00	0.00	0.00	0.00
Debt service	0.00	0.00	0.00	0.00	0.00
Transfers out	0.00	0.00	0.00	0.00	0.00
Emergency Fund	0.00	0.00	0.00	0.00	0.00
Assessor	0.00	0.00	0.00	0.00	0.00
Highways and roads	0.00	0.00	0.00	0.00	0.00
Other	0.00	0.00	0.00	0.00	0.00
Total Expenditures	13,088.22	3,877.12	95,382.65	70,643.71	10,690.94
ESTIMATED ENDING CASH BALANCE	0.00	0.00	0.00	0.00	0.00
OTHER NET RESOURCES AVAILABLE	0.00	0.00	0.00	0.00	0.00
ESTIMATED ENDING BALANCE	0.00	0.00	0.00	0.00	0.00

LACLEDE COUNTY
2012 SUMMARY OF BUDGETS

	Deputy Sheriff Fund	Prosecuting Attorney Training Fund	Prosecuting Attorney Bad Check Fund	Recorder Special Fund	Recorder Tech Fund
NET CASH AVAILABLE FOR 2012	0.00	1,097.82	223,511.72	18,457.90	9,775.70
Revenues, 2012					
Property tax	0.00	0.00	0.00	0.00	0.00
Sales tax	0.00	0.00	0.00	0.00	0.00
Intergovernmental revenues	90,000.00	0.00	0.00	0.00	0.00
Charges for services	0.00	0.00	15,000.00	11,500.00	6,400.00
Interest	0.00	8.00	2,000.00	120.00	100.00
Other	0.00	1,500.00	0.00	0.00	0.00
Operating transfers in	0.00	0.00	0.00	0.00	0.00
Total Revenues	90,000.00	1,508.00	17,000.00	11,620.00	6,500.00
TOTAL FUNDS AVAILABLE	90,000.00	2,605.82	240,511.72	30,077.90	16,275.70
Expenditures, 2012					
County Commission	0.00	0.00	0.00	0.00	0.00
County Clerk	0.00	0.00	0.00	0.00	0.00
Elections	0.00	0.00	0.00	0.00	0.00
Buildings and grounds	0.00	0.00	0.00	0.00	0.00
Employee fringe benefits	0.00	0.00	0.00	0.00	0.00
County Treasurer	0.00	0.00	0.00	0.00	0.00
County Collector	0.00	0.00	0.00	0.00	0.00
Recorder of Deeds	0.00	0.00	0.00	365.00	7,254.00
Circuit Clerk	0.00	0.00	0.00	0.00	0.00
Court Administration	0.00	0.00	0.00	0.00	0.00
Public Administrator	0.00	0.00	0.00	0.00	0.00
Sheriff	90,000.00	0.00	0.00	0.00	0.00
Jail	0.00	0.00	0.00	0.00	0.00
Prosecuting Attorney	0.00	2,000.00	240,000.00	0.00	0.00
Juvenile Officer	0.00	0.00	0.00	0.00	0.00
County Coroner	0.00	0.00	0.00	0.00	0.00
Health and welfare	0.00	0.00	0.00	0.00	0.00
Debt service	0.00	0.00	0.00	0.00	0.00
Transfers out	0.00	0.00	0.00	0.00	0.00
Emergency Fund	0.00	0.00	0.00	0.00	0.00
Assessor	0.00	0.00	0.00	0.00	0.00
Highways and roads	0.00	0.00	0.00	0.00	0.00
Other	0.00	0.00	0.00	0.00	0.00
Total Expenditures	90,000.00	2,000.00	240,000.00	365.00	7,254.00
ESTIMATED ENDING CASH BALANCE	0.00	605.82	511.72	29,712.90	9,021.70
OTHER NET RESOURCES AVAILABLE	0.00	0.00	0.00	0.00	0.00
ESTIMATED ENDING BALANCE	0.00	605.82	511.72	29,712.90	9,021.70

LACLEDE COUNTY
2012 SUMMARY OF BUDGETS

	Circuit Clerk Interest Fund	Tax Maintenance Fund	Shelter Abuse Fund	Law Library Fund	Juvenile Assessment Fund
NET CASH AVAILABLE FOR 2012	43,492.41	81,976.00	2,624.32	165,152.66	11,963.25
Revenues, 2012					
Property tax	0.00	0.00	0.00	0.00	0.00
Sales tax	0.00	0.00	0.00	0.00	0.00
Intergovernmental revenues	0.00	0.00	0.00	0.00	0.00
Charges for services	0.00	0.00	0.00	0.00	0.00
Interest	3,000.00	0.00	90.00	1,500.00	100.00
Other	0.00	35,700.00	12,000.00	20,000.00	400.00
Operating transfers in	0.00	0.00	0.00	0.00	0.00
Total Revenues	3,000.00	35,700.00	12,090.00	21,500.00	500.00
TOTAL FUNDS AVAILABLE	46,492.41	117,676.00	14,714.32	186,652.66	12,463.25
Expenditures, 2012					
County Commission	0.00	0.00	12,000.00	0.00	0.00
County Clerk	0.00	0.00	0.00	0.00	0.00
Elections	0.00	0.00	0.00	0.00	0.00
Buildings and grounds	0.00	0.00	0.00	0.00	0.00
Employee fringe benefits	0.00	0.00	0.00	0.00	0.00
County Treasurer	0.00	0.00	0.00	0.00	0.00
County Collector	0.00	40,700.00	0.00	0.00	0.00
Recorder of Deeds	0.00	0.00	0.00	0.00	0.00
Circuit Clerk	0.00	0.00	0.00	0.00	0.00
Court Administration	0.00	0.00	0.00	160,000.00	0.00
Public Administrator	0.00	0.00	0.00	0.00	0.00
Sheriff	0.00	0.00	0.00	0.00	0.00
Jail	0.00	0.00	0.00	0.00	0.00
Prosecuting Attorney	0.00	0.00	0.00	0.00	0.00
Juvenile Officer	0.00	0.00	0.00	0.00	0.00
County Coroner	0.00	0.00	0.00	0.00	0.00
Health and welfare	0.00	0.00	0.00	0.00	0.00
Debt service	0.00	0.00	0.00	0.00	0.00
Transfers out	0.00	0.00	0.00	0.00	0.00
Emergency Fund	0.00	0.00	0.00	0.00	0.00
Assessor	0.00	0.00	0.00	0.00	0.00
Highways and roads	0.00	0.00	0.00	0.00	0.00
Other	0.00	0.00	0.00	0.00	0.00
Total Expenditures	0.00	40,700.00	12,000.00	160,000.00	0.00
ESTIMATED ENDING CASH BALANCE	46,492.41	76,976.00	2,714.32	26,652.66	12,463.25
OTHER NET RESOURCES AVAILABLE	0.00	0.00	0.00	0.00	0.00
ESTIMATED ENDING BALANCE	46,492.41	76,976.00	2,714.32	26,652.66	12,463.25

LACLEDE COUNTY
2012 SUMMARY OF BUDGETS

	Water #3 Cdbg / Fund	23 Fund	24 Fund	25 Fund	26 Fund
NET CASH AVAILABLE FOR 2012	0.00	0.00	0.00	0.00	0.00
Revenues, 2012					
Property tax	0.00	0.00	0.00	0.00	0.00
Sales tax	0.00	0.00	0.00	0.00	0.00
Intergovernmental revenues	0.00	0.00	0.00	0.00	0.00
Charges for services	0.00	0.00	0.00	0.00	0.00
Interest	0.00	0.00	0.00	0.00	0.00
Other	88,000.00	0.00	0.00	0.00	0.00
Operating transfers in	0.00	0.00	0.00	0.00	0.00
Total Revenues	88,000.00	0.00	0.00	0.00	0.00
TOTAL FUNDS AVAILABLE	88,000.00	0.00	0.00	0.00	0.00
Expenditures, 2012					
County Commission	88,000.00	0.00	0.00	0.00	0.00
County Clerk	0.00	0.00	0.00	0.00	0.00
Elections	0.00	0.00	0.00	0.00	0.00
Buildings and grounds	0.00	0.00	0.00	0.00	0.00
Employee fringe benefits	0.00	0.00	0.00	0.00	0.00
County Treasurer	0.00	0.00	0.00	0.00	0.00
County Collector	0.00	0.00	0.00	0.00	0.00
Recorder of Deeds	0.00	0.00	0.00	0.00	0.00
Circuit Clerk	0.00	0.00	0.00	0.00	0.00
Court Administration	0.00	0.00	0.00	0.00	0.00
Public Administrator	0.00	0.00	0.00	0.00	0.00
Sheriff	0.00	0.00	0.00	0.00	0.00
Jail	0.00	0.00	0.00	0.00	0.00
Prosecuting Attorney	0.00	0.00	0.00	0.00	0.00
Juvenile Officer	0.00	0.00	0.00	0.00	0.00
County Coroner	0.00	0.00	0.00	0.00	0.00
Health and welfare	0.00	0.00	0.00	0.00	0.00
Debt service	0.00	0.00	0.00	0.00	0.00
Transfers out	0.00	0.00	0.00	0.00	0.00
Emergency Fund	0.00	0.00	0.00	0.00	0.00
Assessor	0.00	0.00	0.00	0.00	0.00
Highways and roads	0.00	0.00	0.00	0.00	0.00
Other	0.00	0.00	0.00	0.00	0.00
Total Expenditures	88,000.00	0.00	0.00	0.00	0.00
ESTIMATED ENDING CASH BALANCE	0.00	0.00	0.00	0.00	0.00
OTHER NET RESOURCES AVAILABLE	0.00	0.00	0.00	0.00	0.00
ESTIMATED ENDING BALANCE	0.00	0.00	0.00	0.00	0.00

LACLEDE COUNTY
SUMMARY OF 2011 ACTUAL AMOUNTS

	Total	General Revenue Fund	Special Road and Bridge Fund	Assessment Fund	Enhanced 911 Fund
NET CASH AVAILABLE FOR 2011	7,964,933.79	1,855,890.94	415,944.57	428,633.87	415,809.84
Revenues, 2011					
Property tax	663,789.19	660,121.87	3,667.32		0.00
Sales tax	3,854,907.71	1,928,292.91	0.00		0.00
Intergovernmental revenues	1,614,047.20	304,778.86	869,211.05	364,403.36	0.00
Charges for services	827,348.42	719,905.56	0.00	0.00	0.00
Interest	88,493.17	22,059.30	3,146.93	5,326.09	4,084.34
Other	1,319,512.29	726,018.85	82,101.14	11,949.77	394,955.43
Operating transfers in	2,136,740.59	638,626.28	950,000.00	0.00	0.00
Total Revenues	10,504,838.57	4,999,803.63	1,908,126.44	381,679.22	399,039.77
TOTAL FUNDS AVAILABLE	18,469,772.36	6,855,694.57	2,324,071.01	810,313.09	814,849.61
Expenditures, 2011					
County Commission	3,024,479.55	112,727.04			0.00
County Clerk	114,630.71	114,630.71			0.00
Elections	57,513.14	39,371.48			0.00
Buildings and grounds	763,027.03	763,027.03			0.00
Employee fringe benefits	591,950.12	591,950.12			0.00
County Treasurer	58,743.10	58,743.10			0.00
County Collector	119,399.91	98,912.91			0.00
Recorder of Deeds	115,481.17	110,552.87			0.00
Circuit Clerk	53,580.35	53,580.35			0.00
Court Administration	141,946.33	117,477.20			0.00
Public Administrator	98,225.47	98,225.47			0.00
Sheriff	1,265,239.41	752,841.56			414,601.44
Jail	739,749.14	739,749.14			0.00
Prosecuting Attorney	317,983.79	291,914.59			0.00
Juvenile Officer	0.00	0.00			0.00
County Coroner	22,132.73	22,132.73			0.00
Health and welfare	9,277.12	9,277.12			0.00
Debt service	0.00	0.00			0.00
Transfers out	300,000.00	300,000.00			0.00
Emergency Fund	0.00	0.00			0.00
Assessor	377,424.69			377,424.69	0.00
Highways and roads	2,025,803.85		2,025,803.85		0.00
Other	386,506.05	386,506.05			0.00
Total Expenditures	10,583,093.66	4,661,619.47	2,025,803.85	377,424.69	414,601.44
ADJUSTMENTS	0.00	0.00	0.00	0.00	0.00
CASH AVAILABLE 12-31-2011	7,886,678.70	2,194,075.10	298,267.16	432,888.40	400,248.17

LACLEDE COUNTY
SUMMARY OF 2011 ACTUAL AMOUNTS

	Law Enforcement Sales Tax Fund	Capital Improvement Fund	Health Insurance Fund	County Developmental Tax Fund	Election Services Fund
NET CASH AVAILABLE FOR 2011	1,036,137.33	2,017,852.31	16,257.71	1,097,371.98	23,396.41
Revenues, 2011					
Property tax	0.00	0.00	0.00	0.00	0.00
Sales tax	0.00	0.00	0.00	1,926,614.80	0.00
Intergovernmental revenues	0.00	0.00	0.00	0.00	0.00
Charges for services	0.00	0.00	60,610.08	0.00	2,037.49
Interest	9,759.97	19,768.12	130.15	15,100.65	258.40
Other	0.00	70.54	2,759.03	0.00	13,046.50
Operating transfers in	0.00	119,500.00	426,626.55	1,987.76	0.00
Total Revenues	9,759.97	139,338.66	490,125.81	1,943,703.21	15,342.39
TOTAL FUNDS AVAILABLE	1,045,897.30	2,157,190.97	506,383.52	3,041,075.19	38,738.80
Expenditures, 2011					
County Commission	322,442.00	416,147.95	489,618.40	1,643,391.16	0.00
County Clerk	0.00	0.00	0.00	0.00	0.00
Elections	0.00	0.00	0.00	0.00	18,141.66
Buildings and grounds	0.00	0.00	0.00	0.00	0.00
Employee fringe benefits	0.00	0.00	0.00	0.00	0.00
County Treasurer	0.00	0.00	0.00	0.00	0.00
County Collector	0.00	0.00	0.00	0.00	0.00
Recorder of Deeds	0.00	0.00	0.00	0.00	0.00
Circuit Clerk	0.00	0.00	0.00	0.00	0.00
Court Administration	0.00	0.00	0.00	0.00	0.00
Public Administrator	0.00	0.00	0.00	0.00	0.00
Sheriff	0.00	0.00	0.00	0.00	0.00
Jail	0.00	0.00	0.00	0.00	0.00
Prosecuting Attorney	0.00	0.00	0.00	0.00	0.00
Juvenile Officer	0.00	0.00	0.00	0.00	0.00
County Coroner	0.00	0.00	0.00	0.00	0.00
Health and welfare	0.00	0.00	0.00	0.00	0.00
Debt service	0.00	0.00	0.00	0.00	0.00
Transfers out	0.00	0.00	0.00	0.00	0.00
Emergency Fund	0.00	0.00	0.00	0.00	0.00
Assessor	0.00	0.00	0.00	0.00	0.00
Highways and roads	0.00	0.00	0.00	0.00	0.00
Other	0.00	0.00	0.00	0.00	0.00
Total Expenditures	322,442.00	416,147.95	489,618.40	1,643,391.16	18,141.66
ADJUSTMENTS	0.00	0.00	0.00	0.00	0.00
CASH AVAILABLE 12-31-2011	723,455.30	1,741,043.02	16,765.12	1,397,684.03	20,597.14

LACLEDE COUNTY
SUMMARY OF 2011 ACTUAL AMOUNTS

	Law Enforcement Training Fund	Post Commission Fund	Sheriff Discretionary Fund	Sheriff Revolving Fund	Inmate Security Fund
NET CASH AVAILABLE FOR 2011	10,387.71	481.00	59,749.45	38,369.29	6,181.18
Revenues, 2011					
Property tax	0.00	0.00	0.00	0.00	0.00
Sales tax	0.00	0.00	0.00	0.00	0.00
Intergovernmental revenues	0.00	0.00	46,152.10	23,379.50	6,122.33
Charges for services	6,185.44	3,381.74	0.00	0.00	0.00
Interest	66.91	7.19	452.99	428.92	54.14
Other	0.00	0.00	0.00	0.00	0.00
Operating transfers in	0.00	0.00	0.00	0.00	0.00
Total Revenues	6,252.35	3,388.93	46,605.09	23,808.42	6,176.47
TOTAL FUNDS AVAILABLE	16,640.06	3,869.93	106,354.54	62,177.71	12,357.65
Expenditures, 2011					
County Commission	0.00	0.00	0.00	0.00	0.00
County Clerk	0.00	0.00	0.00	0.00	0.00
Elections	0.00	0.00	0.00	0.00	0.00
Buildings and grounds	0.00	0.00	0.00	0.00	0.00
Employee fringe benefits	0.00	0.00	0.00	0.00	0.00
County Treasurer	0.00	0.00	0.00	0.00	0.00
County Collector	0.00	0.00	0.00	0.00	0.00
Recorder of Deeds	0.00	0.00	0.00	0.00	0.00
Circuit Clerk	0.00	0.00	0.00	0.00	0.00
Court Administration	0.00	0.00	0.00	0.00	0.00
Public Administrator	0.00	0.00	0.00	0.00	0.00
Sheriff	9,804.19	3,381.74	61,424.88	15,342.42	7,843.18
Jail	0.00	0.00	0.00	0.00	0.00
Prosecuting Attorney	0.00	0.00	0.00	0.00	0.00
Juvenile Officer	0.00	0.00	0.00	0.00	0.00
County Coroner	0.00	0.00	0.00	0.00	0.00
Health and welfare	0.00	0.00	0.00	0.00	0.00
Debt service	0.00	0.00	0.00	0.00	0.00
Transfers out	0.00	0.00	0.00	0.00	0.00
Emergency Fund	0.00	0.00	0.00	0.00	0.00
Assessor	0.00	0.00	0.00	0.00	0.00
Highways and roads	0.00	0.00	0.00	0.00	0.00
Other	0.00	0.00	0.00	0.00	0.00
Total Expenditures	9,804.19	3,381.74	61,424.88	15,342.42	7,843.18
ADJUSTMENTS	0.00	0.00	0.00	0.00	0.00
CASH AVAILABLE 12-31-2011	6,835.87	488.19	44,929.66	46,835.29	4,514.47

LACLEDE COUNTY
SUMMARY OF 2011 ACTUAL AMOUNTS

	Deputy Sheriff Fund	Prosecuting Attorney Training Fund	Prosecuting Attorney Bad Check Fund	Recorder Special Fund	Recorder Tech Fund
NET CASH AVAILABLE FOR 2011	0.00	1,155.06	227,966.82	7,362.46	8,294.77
Revenues, 2011					
Property tax	0.00	0.00	0.00	0.00	0.00
Sales tax	0.00	0.00	0.00	0.00	0.00
Intergovernmental revenues	0.00	0.00	0.00	0.00	0.00
Charges for services	0.00	0.00	17,938.36	11,041.00	6,248.75
Interest	0.00	9.63	2,036.25	119.44	95.48
Other	0.00	1,572.62	0.00	0.00	0.00
Operating transfers in	0.00	0.00	0.00	0.00	0.00
Total Revenues	0.00	1,582.25	19,974.61	11,160.44	6,344.23
TOTAL FUNDS AVAILABLE	0.00	2,737.31	247,941.43	18,522.90	14,639.00
Expenditures, 2011					
County Commission	0.00	0.00	0.00	0.00	0.00
County Clerk	0.00	0.00	0.00	0.00	0.00
Elections	0.00	0.00	0.00	0.00	0.00
Buildings and grounds	0.00	0.00	0.00	0.00	0.00
Employee fringe benefits	0.00	0.00	0.00	0.00	0.00
County Treasurer	0.00	0.00	0.00	0.00	0.00
County Collector	0.00	0.00	0.00	0.00	0.00
Recorder of Deeds	0.00	0.00	0.00	65.00	4,863.30
Circuit Clerk	0.00	0.00	0.00	0.00	0.00
Court Administration	0.00	0.00	0.00	0.00	0.00
Public Administrator	0.00	0.00	0.00	0.00	0.00
Sheriff	0.00	0.00	0.00	0.00	0.00
Jail	0.00	0.00	0.00	0.00	0.00
Prosecuting Attorney	0.00	1,639.49	24,429.71	0.00	0.00
Juvenile Officer	0.00	0.00	0.00	0.00	0.00
County Coroner	0.00	0.00	0.00	0.00	0.00
Health and welfare	0.00	0.00	0.00	0.00	0.00
Debt service	0.00	0.00	0.00	0.00	0.00
Transfers out	0.00	0.00	0.00	0.00	0.00
Emergency Fund	0.00	0.00	0.00	0.00	0.00
Assessor	0.00	0.00	0.00	0.00	0.00
Highways and roads	0.00	0.00	0.00	0.00	0.00
Other	0.00	0.00	0.00	0.00	0.00
Total Expenditures	0.00	1,639.49	24,429.71	65.00	4,863.30
ADJUSTMENTS	0.00	0.00	0.00	0.00	0.00
CASH AVAILABLE 12-31-2011	0.00	1,097.82	223,511.72	18,457.90	9,775.70

LACLEDE COUNTY
SUMMARY OF 2011 ACTUAL AMOUNTS

	Circuit Clerk Interest Fund	Tax Maintenance Fund	Shelter Abuse Fund	Law Library Fund	Juvenile Assessment Fund
NET CASH AVAILABLE FOR 2011	40,361.49	66,456.00	11,515.58	167,990.49	11,367.53
Revenues, 2011					
Property tax	0.00	0.00	0.00	0.00	0.00
Sales tax	0.00	0.00	0.00	0.00	0.00
Intergovernmental revenues	0.00	0.00	0.00	0.00	0.00
Charges for services	0.00	0.00	0.00	0.00	0.00
Interest	3,130.92	763.00	91.17	1,492.46	110.72
Other	0.00	35,244.00	25,416.57	20,138.84	485.00
Operating transfers in	0.00	0.00	0.00	0.00	0.00
Total Revenues	3,130.92	36,007.00	25,507.74	21,631.30	595.72
TOTAL FUNDS AVAILABLE	43,492.41	102,463.00	37,023.32	189,621.79	11,963.25
Expenditures, 2011					
County Commission	0.00	0.00	34,399.00	0.00	0.00
County Clerk	0.00	0.00	0.00	0.00	0.00
Elections	0.00	0.00	0.00	0.00	0.00
Buildings and grounds	0.00	0.00	0.00	0.00	0.00
Employee fringe benefits	0.00	0.00	0.00	0.00	0.00
County Treasurer	0.00	0.00	0.00	0.00	0.00
County Collector	0.00	20,487.00	0.00	0.00	0.00
Recorder of Deeds	0.00	0.00	0.00	0.00	0.00
Circuit Clerk	0.00	0.00	0.00	0.00	0.00
Court Administration	0.00	0.00	0.00	24,469.13	0.00
Public Administrator	0.00	0.00	0.00	0.00	0.00
Sheriff	0.00	0.00	0.00	0.00	0.00
Jail	0.00	0.00	0.00	0.00	0.00
Prosecuting Attorney	0.00	0.00	0.00	0.00	0.00
Juvenile Officer	0.00	0.00	0.00	0.00	0.00
County Coroner	0.00	0.00	0.00	0.00	0.00
Health and welfare	0.00	0.00	0.00	0.00	0.00
Debt service	0.00	0.00	0.00	0.00	0.00
Transfers out	0.00	0.00	0.00	0.00	0.00
Emergency Fund	0.00	0.00	0.00	0.00	0.00
Assessor	0.00	0.00	0.00	0.00	0.00
Highways and roads	0.00	0.00	0.00	0.00	0.00
Other	0.00	0.00	0.00	0.00	0.00
Total Expenditures	0.00	20,487.00	34,399.00	24,469.13	0.00
ADJUSTMENTS	0.00	0.00	0.00	0.00	0.00
CASH AVAILABLE 12-31-2011	43,492.41	81,976.00	2,624.32	165,152.66	11,963.25

LACLEDE COUNTY
SUMMARY OF 2011 ACTUAL AMOUNTS

	Water #3 Cdbg / Fund	23 Fund	24 Fund	25 Fund	26 Fund
NET CASH AVAILABLE FOR 2011	0.00	0.00	0.00	0.00	0.00
Revenues, 2011					
Property tax	0.00	0.00	0.00	0.00	0.00
Sales tax	0.00	0.00	0.00	0.00	0.00
Intergovernmental revenues	0.00	0.00	0.00	0.00	0.00
Charges for services	0.00	0.00	0.00	0.00	0.00
Interest	0.00	0.00	0.00	0.00	0.00
Other	5,754.00	0.00	0.00	0.00	0.00
Operating transfers in	0.00	0.00	0.00	0.00	0.00
Total Revenues	5,754.00	0.00	0.00	0.00	0.00
TOTAL FUNDS AVAILABLE	5,754.00	0.00	0.00	0.00	0.00
Expenditures, 2011					
County Commission	5,754.00	0.00	0.00	0.00	0.00
County Clerk	0.00	0.00	0.00	0.00	0.00
Elections	0.00	0.00	0.00	0.00	0.00
Buildings and grounds	0.00	0.00	0.00	0.00	0.00
Employee fringe benefits	0.00	0.00	0.00	0.00	0.00
County Treasurer	0.00	0.00	0.00	0.00	0.00
County Collector	0.00	0.00	0.00	0.00	0.00
Recorder of Deeds	0.00	0.00	0.00	0.00	0.00
Circuit Clerk	0.00	0.00	0.00	0.00	0.00
Court Administration	0.00	0.00	0.00	0.00	0.00
Public Administrator	0.00	0.00	0.00	0.00	0.00
Sheriff	0.00	0.00	0.00	0.00	0.00
Jail	0.00	0.00	0.00	0.00	0.00
Prosecuting Attorney	0.00	0.00	0.00	0.00	0.00
Juvenile Officer	0.00	0.00	0.00	0.00	0.00
County Coroner	0.00	0.00	0.00	0.00	0.00
Health and welfare	0.00	0.00	0.00	0.00	0.00
Debt service	0.00	0.00	0.00	0.00	0.00
Transfers out	0.00	0.00	0.00	0.00	0.00
Emergency Fund	0.00	0.00	0.00	0.00	0.00
Assessor	0.00	0.00	0.00	0.00	0.00
Highways and roads	0.00	0.00	0.00	0.00	0.00
Other	0.00	0.00	0.00	0.00	0.00
Total Expenditures	5,754.00	0.00	0.00	0.00	0.00
ADJUSTMENTS	0.00	0.00	0.00	0.00	0.00
CASH AVAILABLE 12-31-2011	0.00	0.00	0.00	0.00	0.00

LACLEDE COUNTY
 2012 BUDGET
 GENERAL REVENUE FUND
 SUMMARY OF AVAILABLE RESOURCES, ESTIMATED REVENUES AND
 APPROPRIATIONS FOR 2012 EXPENDITURES, AND ESTIMATED ENDING
 BALANCE

1. Cash Available, December 31, 2011	<u>2,194,075.10</u>
(a) Less outstanding warrants	<u> </u>
2. Net cash available, December 31, 2011	<u>2,194,075.10</u>
3. Estimated revenues for 2012	<u>4,692,466.82</u>
4. Subtotal	<u>6,886,541.92</u>
5. Deduct appropriations for 2012	<u>5,844,364.56</u>
6. Estimated ending cash balance, December 31, 2012	<u>1,042,177.36</u>
7. Other Net Resources Available	<u> </u>
8. Estimated ending balance, December 31, 2012, (After other net resources available)	<u><u>1,042,177.36</u></u>

CASH RECONCILIATION

Cash Available 12-31-2010	<u>1,855,890.94</u>
Revenues - 2011	<u>4,999,803.63</u>
Expenditures - 2011	<u>4,661,619.47</u>
Adjustments:	
Change in outstanding warrants	<u> </u>
Other	<u> </u>
Total	<u>0.00</u>
Cash Available 12-31-2011	<u><u>2,194,075.10</u></u>

LACLEDE COUNTY
 2012 BUDGET
 GENERAL REVENUE FUND
 ESTIMATED REVENUES BY CLASSIFICATION

	2010 Actual	2011 Actual	2012 Estimated
1. PROPERTY TAX REVENUES			
2012 Property taxes			50,000.00
2011 Property taxes			375,000.00
2010 and prior property taxes	450,490.48	560,065.03	10,000.00
Replacement tax on subclass 3 property	98,877.15	100,056.84	100,000.00
Total	549,367.63	660,121.87	535,000.00
2. SALES TAX REVENUES			
Total	1,839,006.47	1,928,292.91	1,920,000.00
3. INTERGOVERNMENTAL REVENUES			
NID Revenues	525.00	1,300.20	400.00
Emergency Management Reimbursement	30,597.08	58,032.01	56,421.82
MCVR Internet Reimb CFDA 90.401	911.88	911.88	912.00
Election Reimbursement / Misc	12,232.68	5,032.63	7,000.00
Merchant License	5,985.00	6,160.00	5,990.00
Voter List Revenues	434.82	360.14	400.00
General Revenue Reimbursement	3,168.58	5,798.95	3,000.00
Financial Institution Tax	1,485.12	1,992.34	1,500.00
Juvenile Detention Fee / Restitution	2,737.62	475.00	1,500.00
Miscellaneous Revenues	5,281.31	7,464.31	5,000.00
PADTR	1,043.67	487.00	487.00
Payment in Lieu of Taxes	40,136.00	34,243.00	34,000.00
Plat Books	20.00	0.00	
Remonumentation	0.00	0.00	2,500.00
Extradition & Transport of Prisoners	52,541.81	36,747.80	35,000.00
Sheriff's Mileage & Transport	21,330.50	13,936.56	20,000.00
Social Security Inmate Incentive	6,600.00	7,000.00	7,000.00
Inmate Commissary Funds		41,206.77	12,000.00
Circuit copies	10,120.90	8,768.16	10,000.00
State Jury Fee Reimbursement	792.00	1,970.10	1,500.00
Private Car Tax	9,389.41	9,297.88	9,000.00
Recorder Salary Fee	8,956.50	8,748.25	8,626.00
State Recorder Salary Reimbursement	39,487.00	39,760.00	37,245.00
Passports	13,425.00	10,475.00	11,000.00
Courthouse Surplus Sale	0.00	1,369.80	
Voided checks prior years	561.95	833.08	666.00
Indigent Reimbursement	751.00	2,408.00	1,000.00
Total	268,514.83	304,778.86	272,147.82

LACLEDE COUNTY
 2012 BUDGET
 GENERAL REVENUE FUND
 ESTIMATED REVENUES BY CLASSIFICATION

	2010 Actual	2011 Actual	2012 Estimated
4. CHARGES FOR SERVICES			
Sheriff fees	33,702.55	34,945.73	35,000.00
County Clerk fees	1,128.75	1,102.35	1,100.00
Circuit Clerk fees	23,912.11	23,274.50	22,000.00
Recorder of Deeds fees	122,294.00	117,370.70	130,000.00
Prosecuting Attorney fees	46,950.06	46,549.43	48,000.00
Collector commissions and fees	293,868.57	294,931.43	294,000.00
Collection of City Taxes	17,930.42	18,124.37	18,000.00
Public Administrator Commissions	70,215.67	64,677.05	60,000.00
Housing Prisoners	143,570.00	118,930.00	119,000.00
Total	753,572.13	719,905.56	727,100.00
5. INTEREST INCOME	30,360.02	22,059.30	20,000.00
6. OTHER REVENUES			
Auctioneer License	400.00	570.00	400.00
Liquor License	24,095.01	23,342.51	22,000.00
Garnishment Fee	133.45	130.12	100.00
Jail Cost/Prisoner Reimbursement	188,080.50	177,896.38	180,000.00
Jail Phone Commissions	41,331.35	34,199.53	34,000.00
Traffic Safety Grant	16,489.59	143.92	1,000.00
Calendar Fund	600.00	460.00	460.00
Recorder Interest	65.03	74.75	109.00
Criminal Cost	430,475.54	467,975.99	350,000.00
Publication Fees	5,806.11	5,745.90	5,000.00
Homelessness Grant	60,885.02	13,095.07	
Cable Franchise Fee	2,317.73	2,384.68	2,300.00
Tr In Unclaimed Fees/school bond	1,791.00	0.00	450.00
Total	772,470.33	726,018.85	595,819.00
7. TRANSFERS IN			
Tr In CDT money	605,000.00	605,000.00	605,000.00
Tr In - Sheriff Discretionary Fund	18,744.83	8,126.28	0.00
Tr In - Tax Main / Embarq	1,200.00		2,400.00
Tr In PABCF Salary/Election	0.00	15,500.00	0.00
Tr In Family Access	0.00		5,000.00
Tr In Sheriff Rev Fund - Salary	5,000.00	10,000.00	10,000.00
Total	629,944.83	638,626.28	622,400.00
8. GRAND TOTAL REVENUES	4,843,236.24	4,999,803.63	4,692,466.82

